

※ This document is a temporary specification which does not include whole information about the product.
 ※ This document is subject to be changed for approving product quality without notice.

| | | | |
|----------------|-------------|-------------|-----|
| SPECIFICATIONS | ITEM | LINE FILTER | Rev |
| | TNC SPEC NO | DH109160S | 0 |

1. ELECTRICAL CHARACTERISTIC

| NO | ITEM | TERMINAL | SPECIFICATION | | | REMARKS |
|----|-----------------------|------------------|---------------------|--------|-------------|--------------------------------------|
| 1 | RATED VOLTAGE | LINE TO LINE | AC 250V | | | |
| 2 | RATED CURRENT | START-FINISH | 9.0A | | | |
| 3 | INDUCTANCE | START-FINISH | 16KHz | 16.0mH | + 50%, -30% | HP-4194A 1V (25°C±2°C) |
| 4 | TEMPERATURE RISE | AT RATED CURRENT | 55°C MAX | | | |
| 5 | DC RESISTANCE | START-FINISH | 28.0 mΩ MAX | | | HIOKI 3540 (25°C±2°C) |
| 6 | WITHSTANDING VOLTAGE | LINE TO LINE | AC 1,500V 1 MINUTE. | | | TOS-5101 CUT OFF CURRENT (5mA) |
| 7 | INSULATION RESISTANCE | LINE TO COVER | DC 500V, 300MΩ MIN. | | | TOS-8850 |

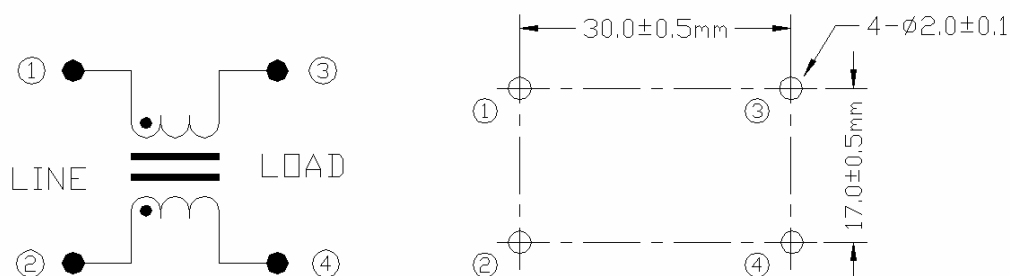
2. OPERATING TEMPERATURE RANGE

-25°C TO +120°C INCLUDING TEMPERATURE RISE.

3. KEEP TEMPERATURE RANGE

-10°C ~ +60°C.

4. CIRCUIT DIAGRAM



Minimum PCB piercing plan

#125 , WOLMUN-RI, PALTAN-MYEON,
 HWASEONG-SI, KYUNGGI-DO, KOREA 445-914
 TEL : 82+(0)313543160
 FAX : 82+(0)313543156

TNC
TNC Co.,LTD

PAGE

1/2

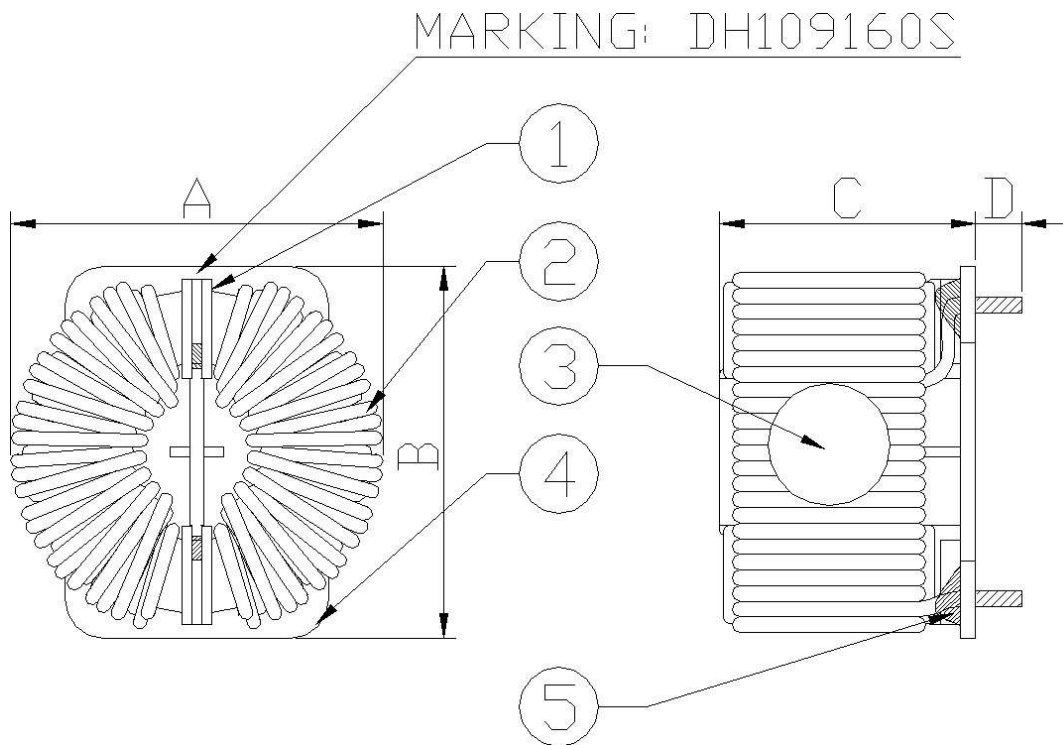
※ This document is a temporary specification which does not include whole information about the product.
 ※ This document is subject to be changed for approving product quality without notice.

| | | | |
|----------------|-------------|-------------|-----|
| SPECIFICATIONS | ITEM | LINE FILTER | Rev |
| | TNC SPEC NO | DH109160S | 0 |

5. WINDING SPECIFICATION

| NO | TERMINAL | | WIRE | TURNS | WINDING METHOD | UNBALANCE SPECIFICATION |
|----|----------|--------|----------|---------|----------------|-------------------------------|
| | START | FINISH | | | | |
| L1 | 1 | 3 | PEW 1.4Φ | 35 ±1Ts | HANDMADE | BETWEEN L1 AND L2 (1.0mH MAX) |
| L2 | 2 | 4 | | | | |

6. SHAPE AND DIMENSION



| DIMENSION | A | B | C | D |
|-----------|---|------------|------------|------------|
| | | 42.0mm MAX | 40.0mm MAX | 30.0mm MAX |

#125 , WOLMUN-RI, PALTAN-MYEON,
 HWASEONG-SI, KYUNGGI-DO, KOREA 445-914
 TEL : 82+(0)313543160
 FAX : 82+(0)313543156

TNC
TNC Co.,LTD

PAGE

2/2